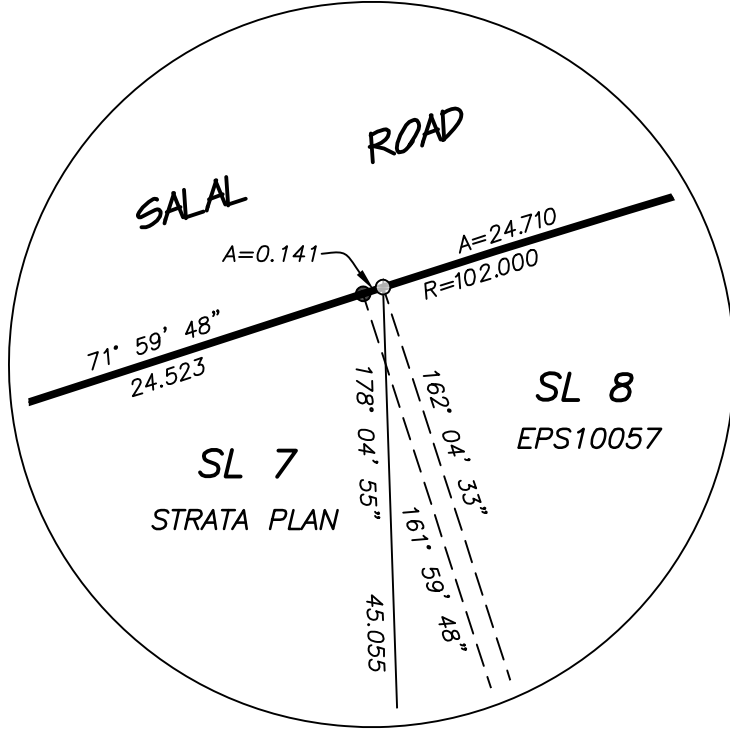


THE INTENDED PLOT SIZE OF THIS PLAN IS 560mm IN WIDTH BY 864mm IN HEIGHT (D SIZE) WHEN PLOTTED AT A SCALE OF 1:400.

BCGS MAP SHEET 92G.042

CIVIC ADDRESS: 5112 CHAPMAN ROAD, SECHELT BC

NORTH SHORE-SQUAMISH VALLEY ASSESSMENT AREA DISTRICT OF SECHELT



SCALE IS 1:50 AT INTENDED PLOT SIZE OF PLAN.



NORTH

GCM 08H2544 UTM ZONE 10 COORDINATES DATUM: NAD83(CSRS) 4.0.0.BC.1 UTM NORTHING: 5477749.508 UTM EASTING: 447477.510 ESTIMATED ABSOLUTE ACCURACY: 0.02M

GCM 09H2566 UTM ZONE 10 COORDINATES DATUM: NAD83(CSRS) 4.0.0.BC.1 UTM NORTHING: 5477751.914 UTM EASTING: 447689.190 ESTIMATED ABSOLUTE ACCURACY: 0.02M

A COVENANT IN THE NAME OF VANCOUVER COASTAL HEALTH PURSUANT TO SECTION 219 OF THE LAND TITLE ACT IS A CONDITION OF APPROVAL FOR THIS SUBDIVISION.

A COVENANT IN THE NAME OF THE DISTRICT OF SECHELT PURSUANT TO SECTION 219 OF THE LAND TITLE ACT IS A CONDITION OF APPROVAL FOR THIS SUBDIVISION.

LEGEND INTEGRATED SURVEY AREA #79 DISTRICT OF SECHELT, NAD83 (CSRS) 4.0.0.BC.1

GRID BEARINGS ARE DERIVED FROM OBSERVATIONS BETWEEN INTEGRATED SURVEY CONTROL MONUMENTS 08H2544 AND 09H2566 AND ARE REFERRED TO THE CENTRAL MERIDIAN OF UTM ZONE 10.

UTM COORDINATES AND ESTIMATED ABSOLUTE ACCURACY ACHIEVED ARE DERIVED FROM MASCOOT PUBLISHED COORDINATES AND STANDARD DEVIATIONS FOR GEODETIC CONTROL MONUMENTS 08H2544 AND 09H2566.

- DENOTES A STANDARD IRON POST FOUND
⊙ DENOTES A STANDARD CAPPED POST FOUND
⊙ DENOTES A NON STANDARD POST FOUND
⊙ DENOTES A CONTROL MONUMENT FOUND
○ DENOTES A STANDARD IRON POST SET

BK DENOTES BLOCK
BT DENOTES BEARING TREE

THIS PLAN SHOWS HORIZONTAL GROUND-LEVEL DISTANCES, UNLESS OTHERWISE SPECIFIED. TO COMPUTE GRID DISTANCES, MULTIPLY GROUND-LEVEL DISTANCES BY THE AVERAGE COMBINED FACTOR OF 0.9996426. THE AVERAGE COMBINED FACTOR HAS BEEN DERIVED FROM CONTROL MONUMENT 08H2544.

THIS PLAN LIES WITHIN THE SUNSHINE COAST REGIONAL DISTRICT.

THIS PLAN LIES WITHIN THE JURISDICTION OF THE APPROVING OFFICER FOR THE DISTRICT OF SECHELT.

THE FIELD SURVEY REPRESENTED BY THIS PLAN WAS COMPLETED ON THE 8TH DAY OF DECEMBER, 2023. SEAMUS POPE, BCLS 923

STRATA LAND SURVEYING INC. SEAMUS POPE, BCLS BOX 61 (5689 DOLPHIN ST) SECHELT, BC V0N 3A0 T. 604.885.3237 22082-1106.BLS